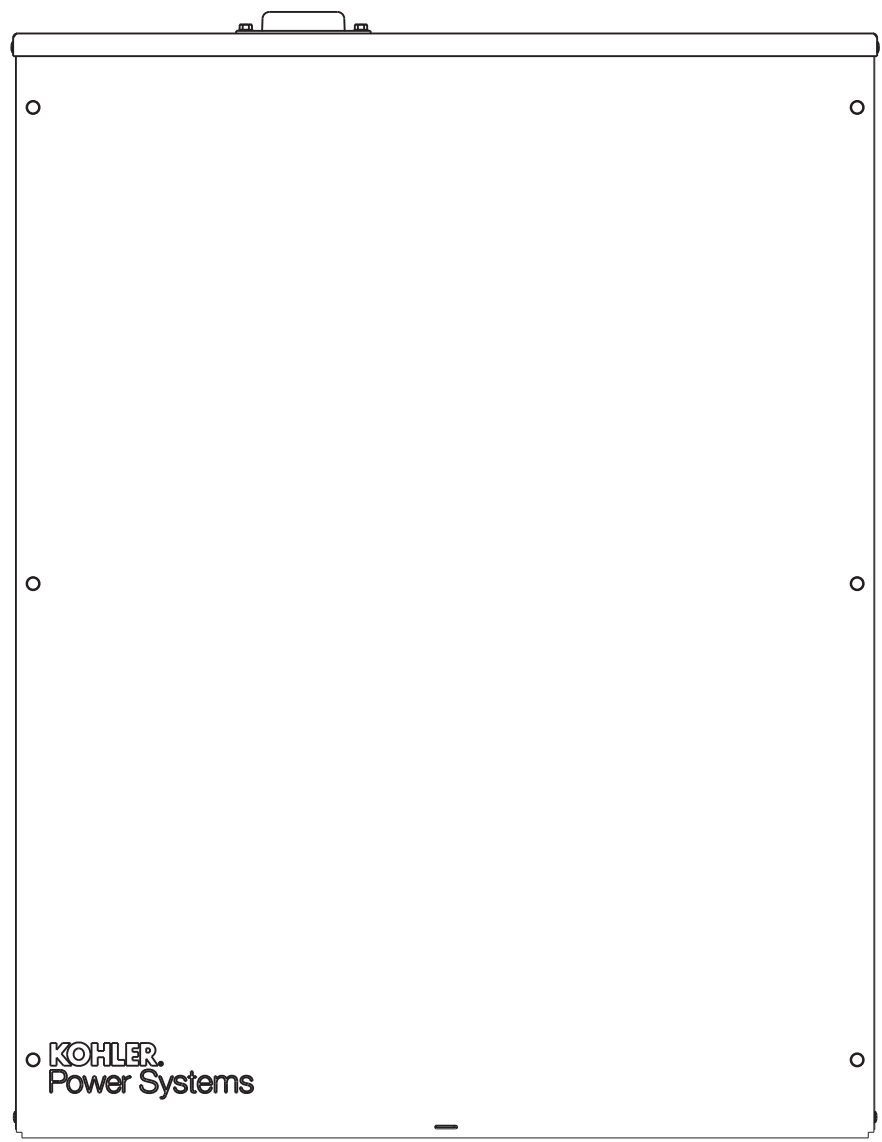
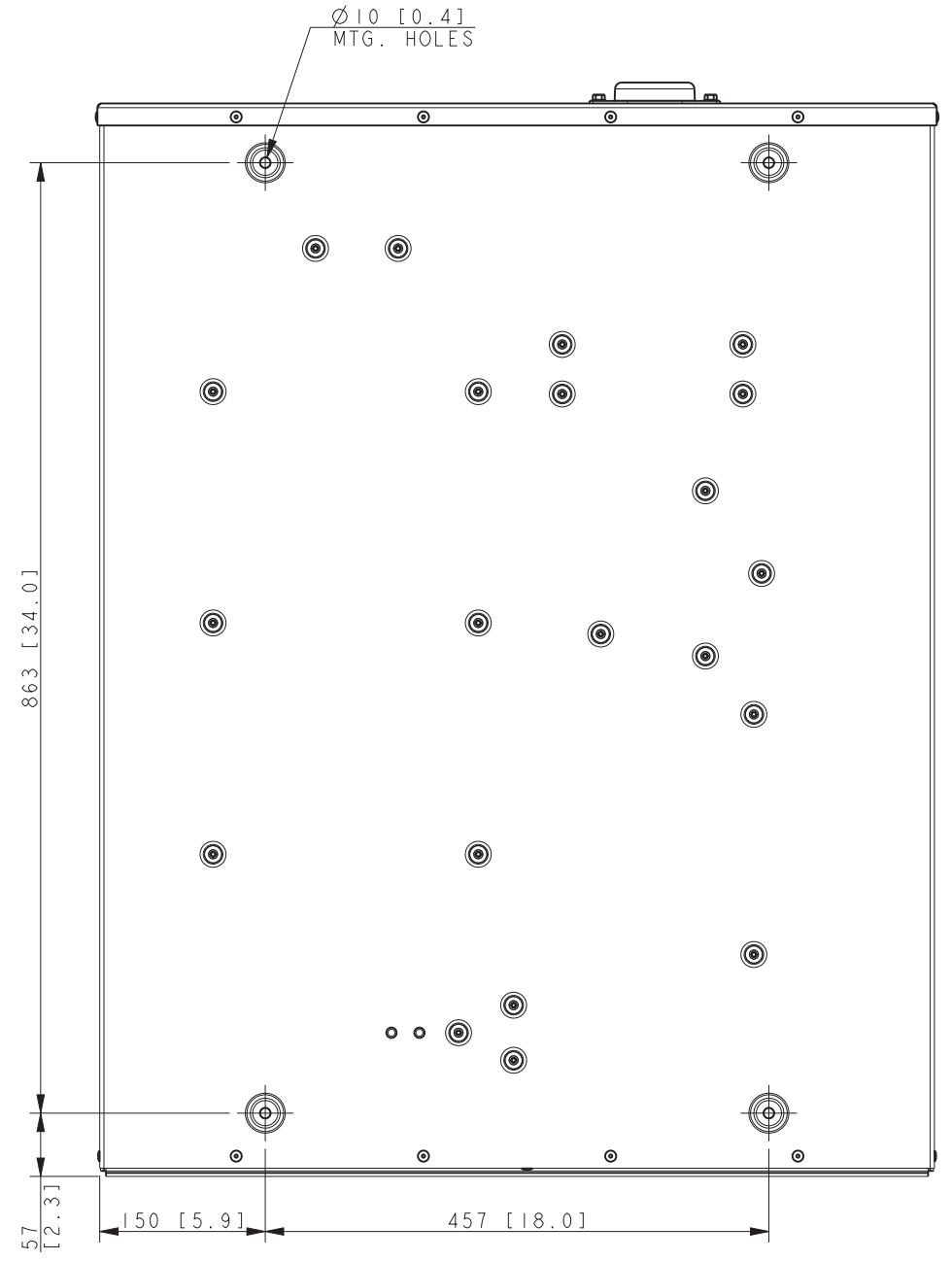
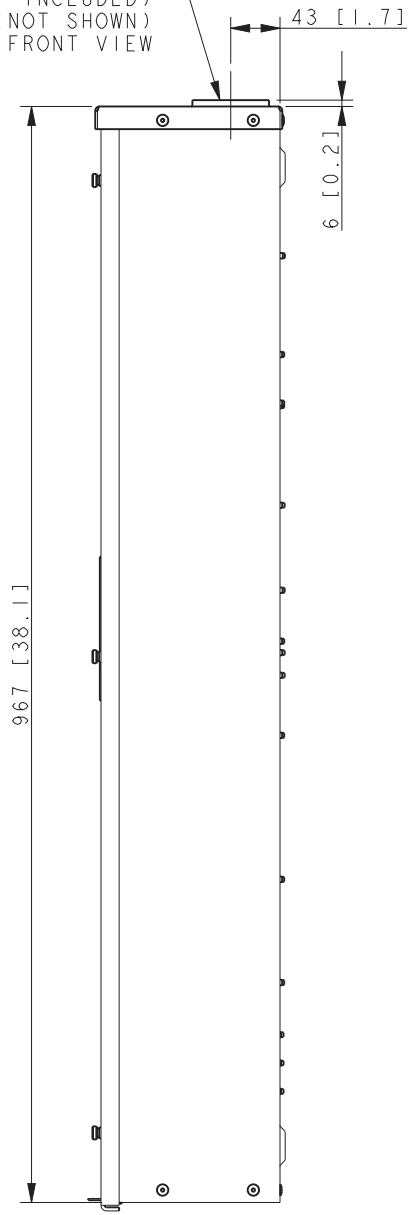


HOLE SIZED FOR  
1/4-20 THREAD-FORMING SCREW  
NOTE: THREAD SEALANT MUST BE  
APPLIED TO SCREW THREADS IF  
SCREWS ARE REMOVED OR REPLACED.

RAIN TIGHT  
HUB FLANGE  
(CAP INCLUDED)  
(NOT SHOWN)  
SEE FRONT VIEW



NOTES:  
DIMENSIONS IN [ ] ARE INCHES.

FINISH: ANSI 49 GRAY

REFER TO OPERATOR MANUAL PRIOR TO INSTALATION AND OPERATION OF UNIT.

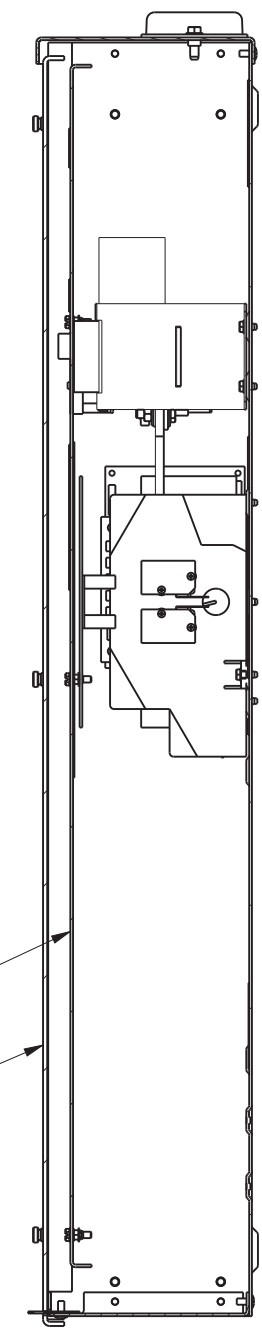
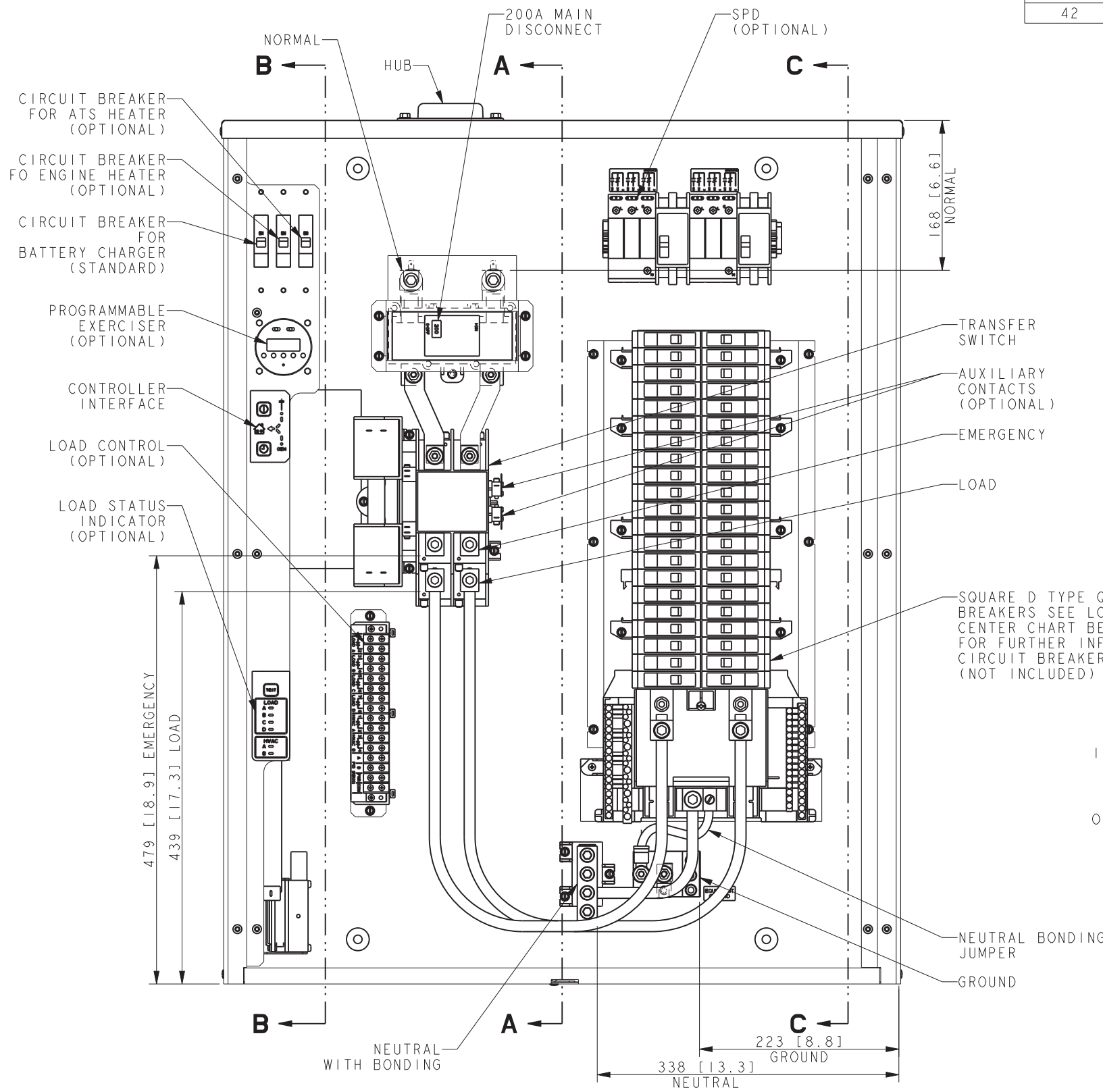
APPROXIMATE WEIGHT: 32 Kg (70 LBS)

SERVICE DISCONNECT BREAKER IS 200A 80% RATED. CONTINUOUS LOAD CURRENT IS NOT TO EXCEED 80% OF BREAKER RATING.

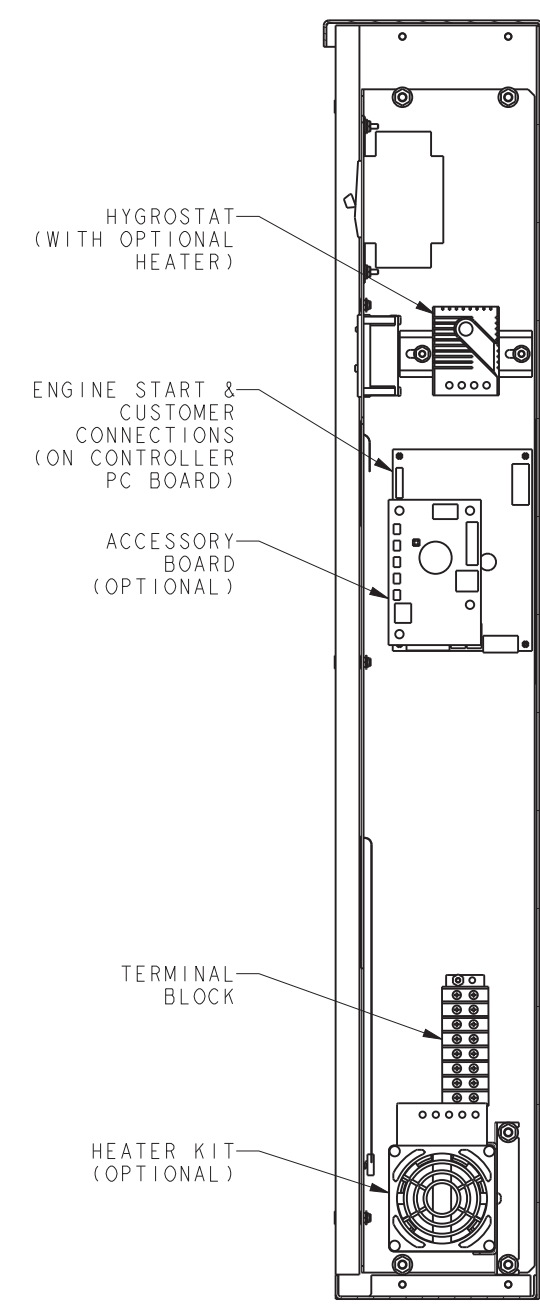
200A SERVICE ENTRANCE  
WITH LOADCENTER  
MPAC 500 CONTROLLER  
NEMA 3R ENCLOSURE

REV	DATE	ON COMPOSITE DWGS, SEE PART NO. FOR REVISION LEVEL	BY	UNLESS OTHERWISE SPECIFIED - 1) DIMENSIONS ARE IN MILLIMETERS 2) TOLERANCES ARE:	<b>KOHLER CO.</b> METRIC PRO-E POWER SYSTEMS, KOHLER, WI 53044 U.S.A. THIS DRAWING IN DESIGN AND DETAIL IS KOHLER CO. PROPERTY AND MUST NOT BE USED EXCEPT IN CONNECTION WITH KOHLER CO. WORK. ALL RIGHTS OF DESIGN OR INVENTION ARE RESERVED.
-	4-1-13	NEW DRAWING [CT31187]	BTW	X.XX ± 0.25 X.X ± 1.0 X ± 1.5 ANGLES ± 0° 30' MAX. SURFACE FINISH THIRD ANGLE PROJECTION	
				APPROVALS	DATE
				DRAWN	BTW 4-1-13
				CHECKED	BTW 4-1-13
				APPROVED	MTL 4-1-13
TITLE <b>DIMENSION PRINT</b>					SCALE 0.30 CAD NO. SHEET 1 of 3 DWG NO. <b>ADV-8540</b> <b>D</b>

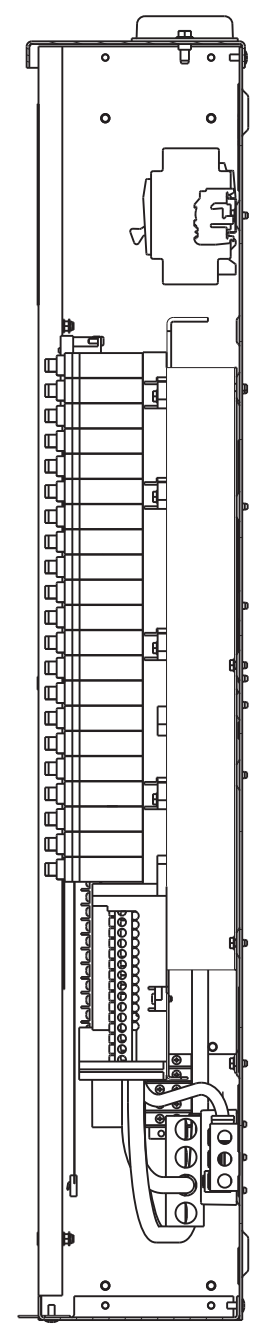
LOAD CENTER CHART INFORMATION				
SPACES	MAXIMUM NUMBER OF SINGLE POLE CIRCUITS	MAXIMUM NUMBER OF TANDEM CIRCUIT BREAKERS	MAIN TERMINAL SIZE AWG	NUMBER OF BRANCH NEUTRAL TERMINALS
			Al OR Cu	
42	42	0	4-300 MCM	55



SECTION A-A



SECTION B-B



SECTION C-C

- HYGROSTAT (WITH OPTIONAL HEATER)
- ENGINE START & CUSTOMER CONNECTIONS (ON CONTROLLER PC BOARD)
- ACCESSORY BOARD (OPTIONAL)
- TERMINAL BLOCK
- HEATER KIT (OPTIONAL)

SWITCH RATING (AMPS)	SCREW TYPE TERMINALS FOR EXTERNAL POWER CONNECTIONS			
	RANGE OF AL-CU WIRE SIZES			
	NORMAL SOURCE DISCONNECT BREAKER (PER PHASE)	CONTACTOR (PER PHASE)	NEUTRAL	GROUND
200	#4 AWG TO 300 KCMIL	(1) #6 AWG TO 250 KCMIL	(3) #12 - 250 KCMIL (Cu) OR (3) #10 - 250 KCMIL (Al)	(4) #14 TO 1/0 AWG

200A SERVICE ENTRANCE WITH LOADCENTER MPAC 500 CONTROLLER NEMA 3R ENCLOSURE

REV	DATE	ON COMPOSITE DWGS. SEE PART NO. FOR REVISION LEVEL	BY
-	4-1-13	NEW DRAWING [CT31187]	BTW

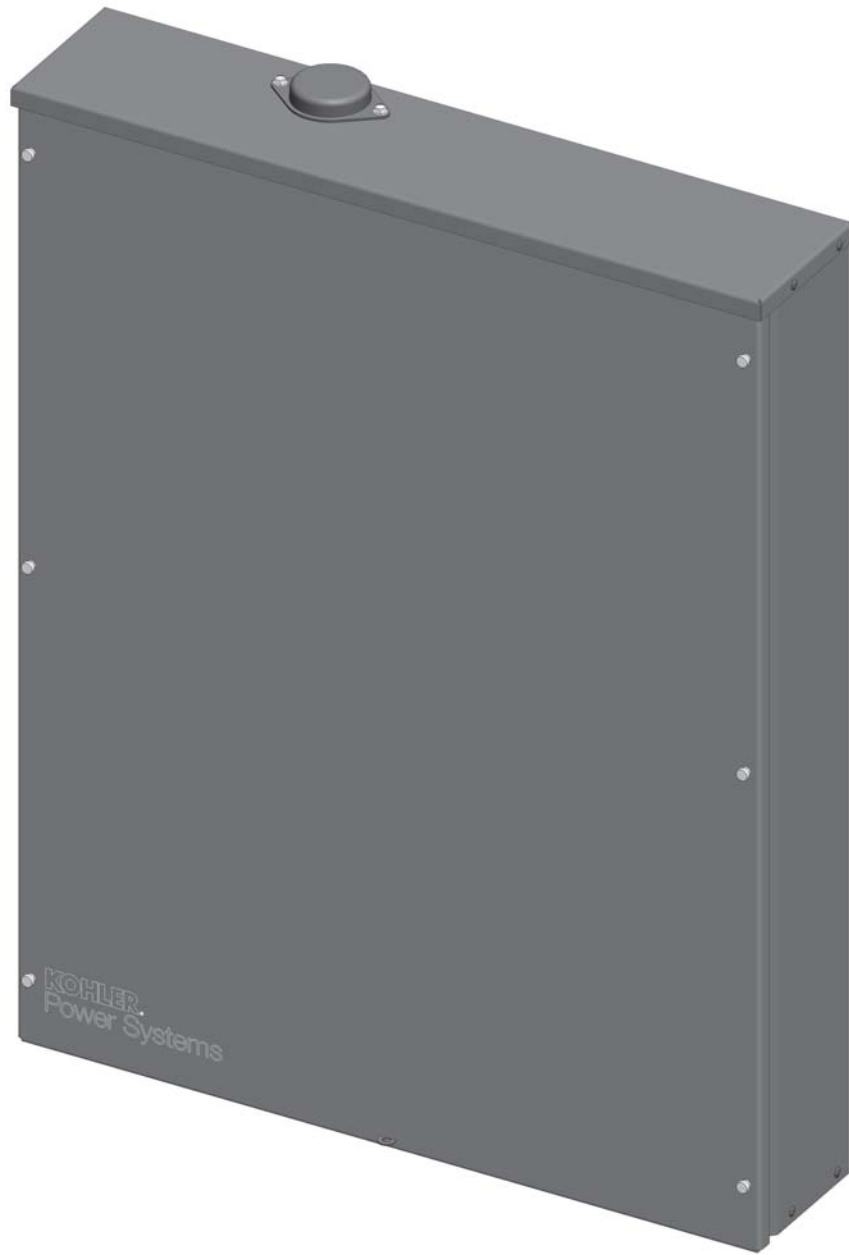
UNLESS OTHERWISE SPECIFIED -  
 1) DIMENSIONS ARE IN MILLIMETERS  
 2) TOLERANCES ARE:  
 X.XX ± 0.25  
 X.X ± 1.0  
 X ± 1.5  
 ANGLES ± 0° 30' MAX.  
 SURFACE FINISH  
 THIRD ANGLE PROJECTION

APPROVALS	DATE
DRAWN BTW	4-1-13
CHECKED BTW	4-1-13
APPROVED MTL	4-1-13

**KOHLER CO.** METRIC PRO-E  
 POWER SYSTEMS, KOHLER, WI 53044 U.S.A.  
 THIS DRAWING IN DESIGN AND DETAIL IS KOHLER CO. PROPERTY AND MUST NOT BE USED EXCEPT IN CONNECTION WITH KOHLER CO. WORK. ALL RIGHTS OF DESIGN OR INVENTION ARE RESERVED.

TITLE: **DIMENSION PRINT**

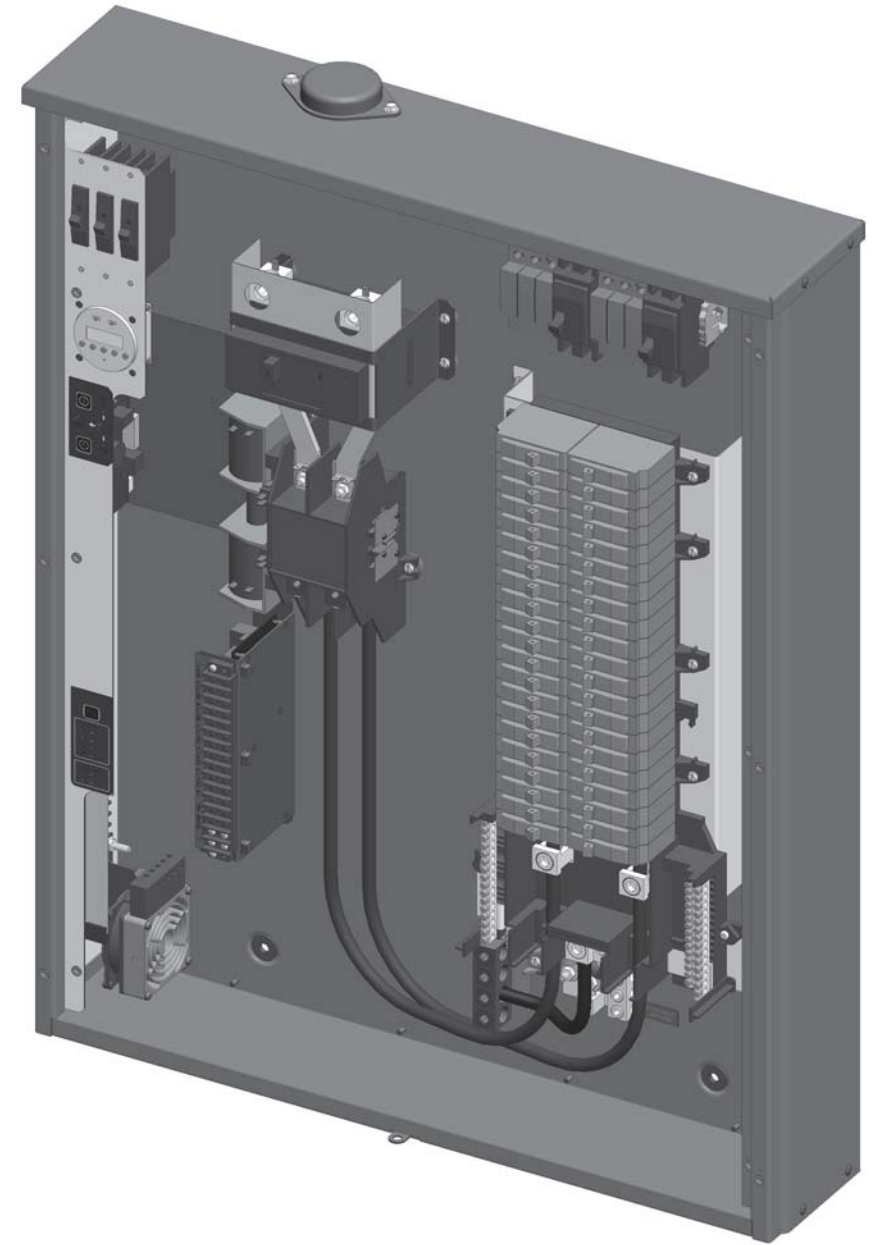
SCALE: 0.35 CAD NO. SHEET 2 of 3  
 DWG NO. **ADV-8540** D



ENCLOSURE WITH COVER SHOWN



INNER PANEL SHOWN



COVER & INNER PANEL REMOVED

200A SERVICE ENTRANCE  
WITH LOADCENTER  
MPAC 500 CONTROLLER  
NEMA 3R ENCLOSURE

REV	DATE	ON COMPOSITE DWGS. SEE PART NO. FOR REVISION LEVEL	BY	UNLESS OTHERWISE SPECIFIED - 1) DIMENSIONS ARE IN MILLIMETERS 2) TOLERANCES ARE:	APPROVALS	DATE	TITLE
-	4-1-13	NEW DRAWING [CT31187]	BTW	X.XX ± 0.25 X.X ± 1.0 X ± 1.5 ANGLES ± 0° 30' MAX.		4-1-13	<b>KOHLER CO.</b> METRIC PRO-E POWER SYSTEMS, KOHLER, WI 53044 U.S.A. THIS DRAWING IN DESIGN AND DETAIL IS KOHLER CO. PROPERTY AND MUST NOT BE USED EXCEPT IN CONNECTION WITH KOHLER CO. WORK. ALL RIGHTS OF DESIGN OR INVENTION ARE RESERVED.
				THIRD ANGLE PROJECTION			<b>DIMENSION PRINT</b>
					SCALE 0.30	CAD NO.	SHEET 3 of 3
					DWG NO.	<b>ADV-8540</b>	<b>D</b>